

**STEEL BLOCKS**



STEEL BLOCKS FOR ICEBREAKERS



STEEL BLOCKS FOR CRUISE VESSELS



SUPERSTRUCTURE BLOCKS

**HULLS**



FLOATING UNITS FOR ICEBREAKERS



HULLS OF FERRIES



HULL FOR PATROL & NAVY VESSELS

**OFFSHORE JACK-UPS AND PLATFORMS**



WINDLIFT 1



TRANSFORMER PLATFORM



ODIN

**FISHING VESSELS**



GITTE HENNING S349



LIAFJORD



CHRISTINA E

**CAR AND PASSENGER FERRIES**



BOKNAFJORD



MAHUMAA



SCARVEN

**SPECIALIZED VESSELS (DREDGERS, SUPPLY VESSELS, RESEARCH VESSELS)**



MACUTI



SVITZER GEO



MINTIS



**CONTACT US**

**WESTERN BALTIJA SHIPBUILDING**

ADDRESS Pilies str. 8, LT-91503 Klaipeda, Lithuania  
PHONE +370 46 398249, +370 46 398119  
FAX +370 46 398200  
E-MAIL newbuilding@wsy.lt  
WEBSITE www.wbs.lt



**WESTERN BALTIJA  
SHIPBUILDING**  
BLRT GRUPP

**YOUR RELIABLE PARTNER IN  
SHIPBUILDING**





# ABOUT THE COMPANY

Western Baltija Shipbuilding is a modern enterprise offering full range of services from conceptual design to “turn-key”. Company is a part of Western Shipyards Group which belongs to the biggest Estonian corporation – BLRT Grupp. The main direction of Western Baltija Shipbuilding strategy is building steel blocks, hulls and “turn-key” vessels. Our team offers accumulated experience and new ideas, which are recognized and valued by our world-known customers.

Western Baltija Shipbuilding (WBS), having implemented a huge number of different projects, is **one of the most experienced shipyard** in the Baltic region. Western Baltija Shipbuilding **is a modern shipyard**, with modern shipbuilding equipment and technologies. **Ice-free Klaipeda port** allows uninterrupted business operations all over the year. **High quality and on-time deliveries** are secured by more than 450 highly skilled employees whose training and professional development is constantly being improved.

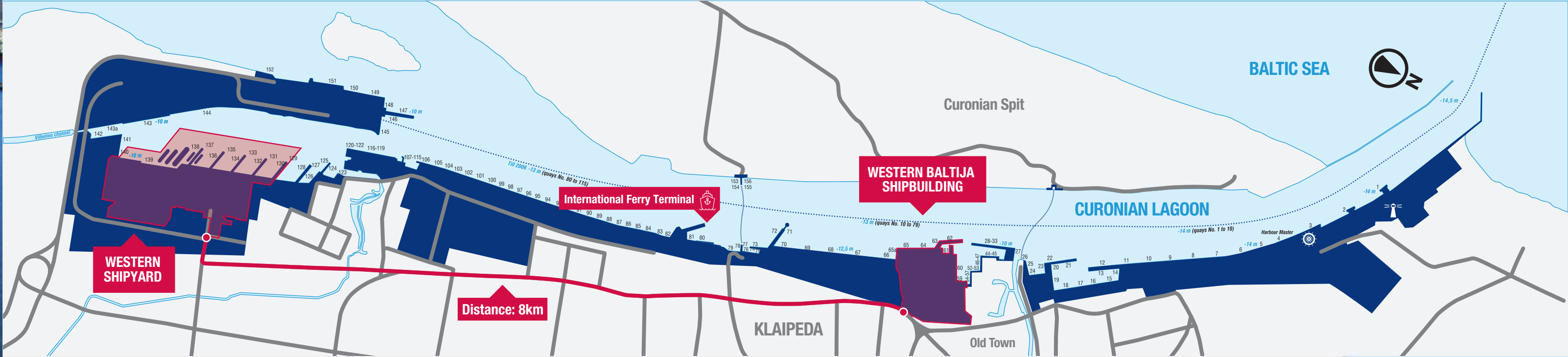
The Company is certified with quality management system **ISO 9001**, environment protection management system **ISO 14001**, **OHSAS 18001** and risk assessment program (grade B) - JH143.

## OUR PRODUCTS

- Steel blocks and hulls
- Offshore Jack-ups and platforms
- Fishing vessels
- Multipurpose vessels
- Car and passenger ferries
- Escort and harbour tugs
- Specialized vessels (Dredgers, Supply vessels, Research vessels)

## KEY DATA

Total territory – **25 ha**  
Total production area – **41.546 m²**  
Workshop dimensions LxB – **279x180 m**



## CAPABILITIES

- A** Blasting/painting chamber 1 & 2  
35 x 17 x 30 m
- B** Blasting/painting chamber 3  
35 x 17 x 30 m
- C** Hydraulic lifting transporters  
160 & 550 TLC
- D** Volume section welding robot
- E** Flat section assembly line
- F** Heavy duty transport system
- G** Storage area
- H** Loading onto barge

## OTHER

- I** Administration
- J** Restrooms
- K** Gym

## MAIN AREAS

- 1** Production preparation area
- 2** Micro panel line
- 3** Section assembly area
- 4** Curved section assembly area  
200m
- 5** Volume blocks assembly area  
Gates dimensions (HxB)  
10 x 18m & 14 x 18m
- 6** Grand blocks assembly area  
LxBxH = 170x21x20m
- 7** Mega blocks assembly area
- 8** Ship's hull preparation area  
LxBxH = 120x21x23 m
- 9** Outfitting and launching area  
200m
- 10** Launching dock  
Floating dock for launching ships  
up to 130x20 m, 2800 TLC
- 11** Outfitting and quay trial area